

Merilee Fowler

Executive Director

MATFORCE

www.matforce.org



Yavapai County Overdose Fatality Review Board

Yavapai County
Rural County in Center of Arizona

Population – 225,000
9 incorporated municipalities
Over 20 unincorporated
communities
2 tribal nations
Over 8000 square miles



Yavapai County Overdose Fatality Review Board



Formed in 2016

Idea of coalition member during planning session

Create an annual report each year.

What do we include in
our annual report?



Current Overdose Trends in Yavapai County



Fentanyl overdose deaths increased by over 7 times in 6 years. It was a contributing factor in 59% of deaths in 2021.

47%
increase

in overdose deaths from 2020
to 2021 in 31- to 40-year-olds

633% increase

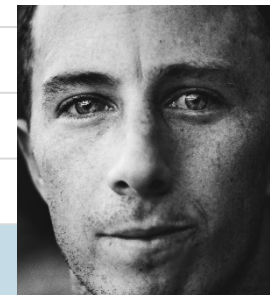
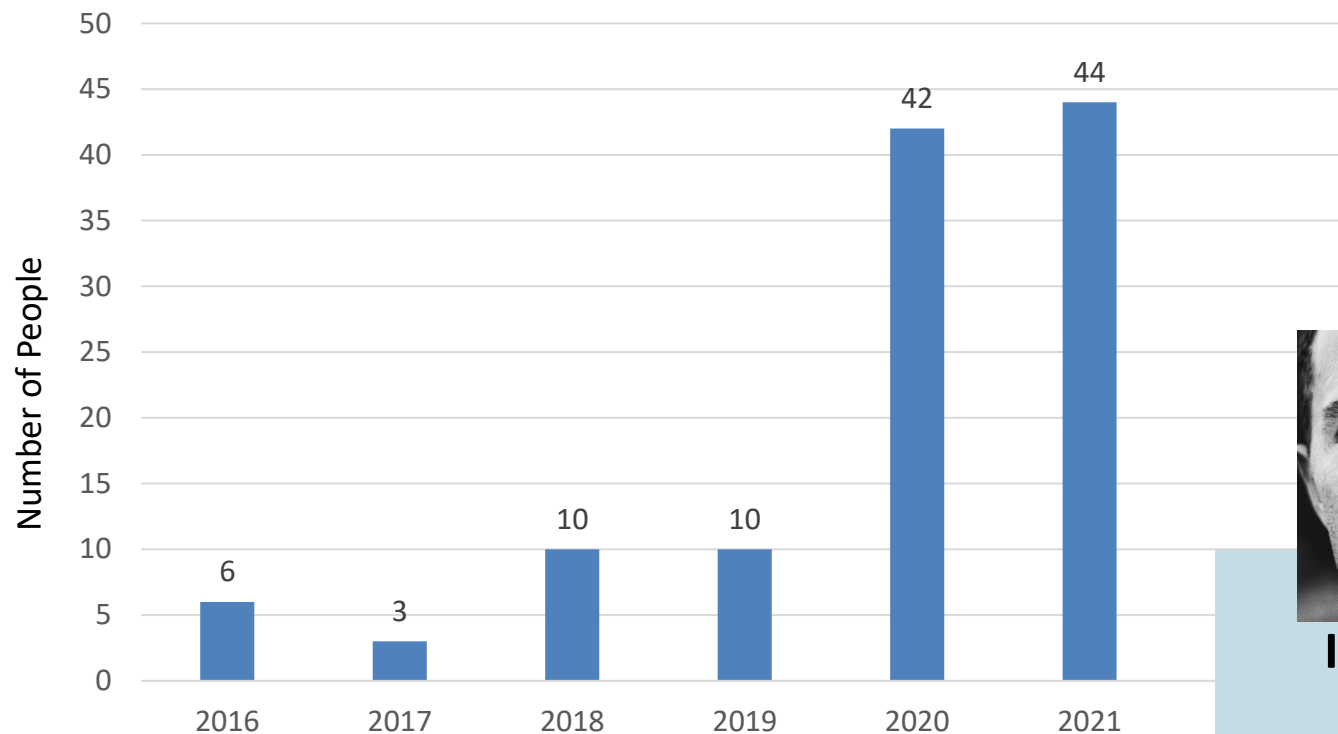
Poly Drug Use
A majority of overdose
deaths involved
Multiple drugs in system.

A logo with "METH 2.0" in white, stylized, block letters on a blue background. Below it, "TheNewMeth.com" is written in white on a black background. Underneath, a white box contains black text: "Methamphetamine was a contributing factor in over 38% of the 2021 overdose deaths in Yavapai County. Deaths involving methamphetamine have almost tripled since 2016."/>

METH 2.0
TheNewMeth.com
Methamphetamine was a contributing factor in over 38% of the 2021 overdose deaths in Yavapai County. Deaths involving methamphetamine have almost tripled since 2016.

Overdose Deaths Involving Fentanyl

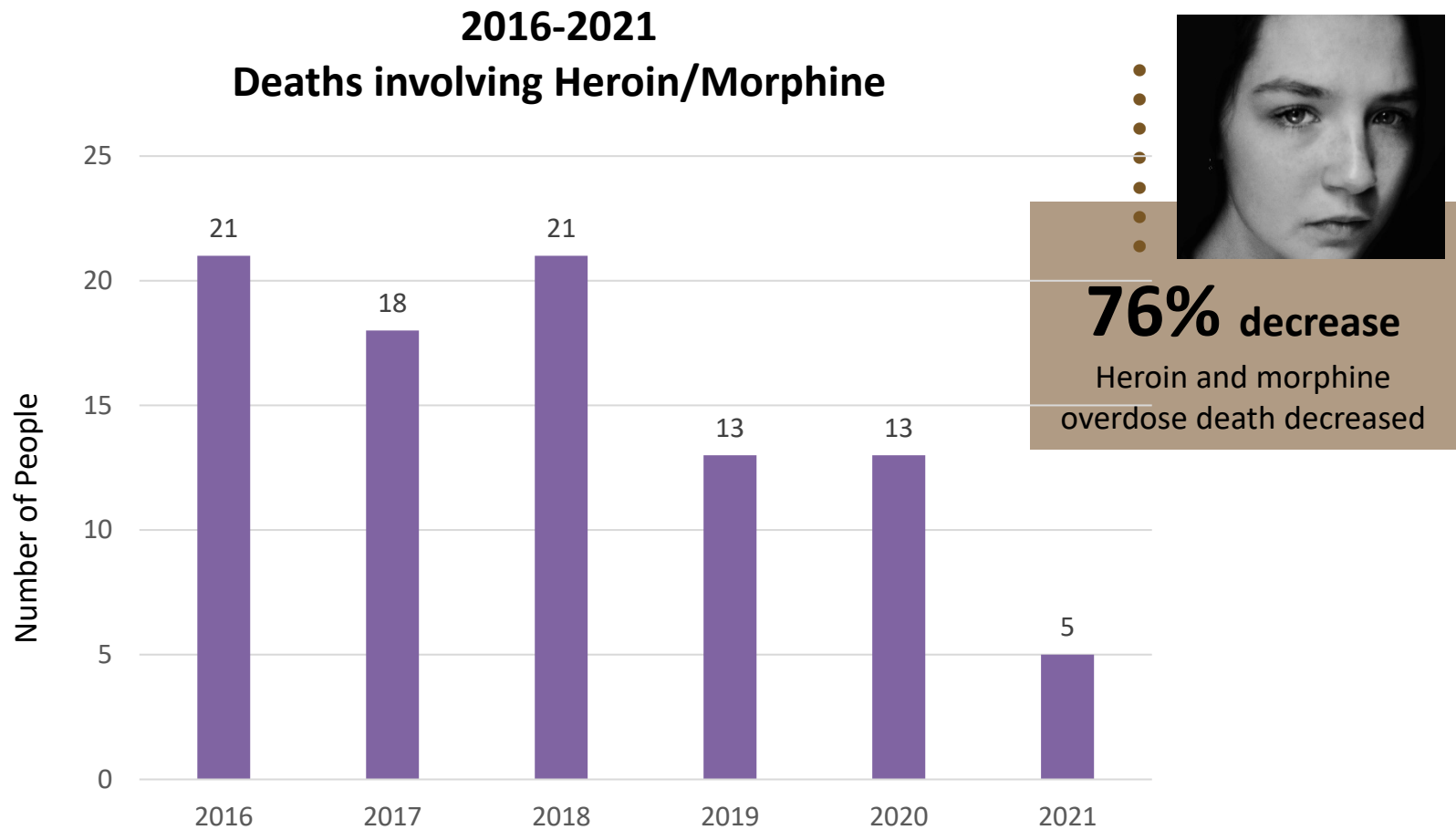
2016-2021
Deaths involving Fentanyl



**Increased
over 7x**

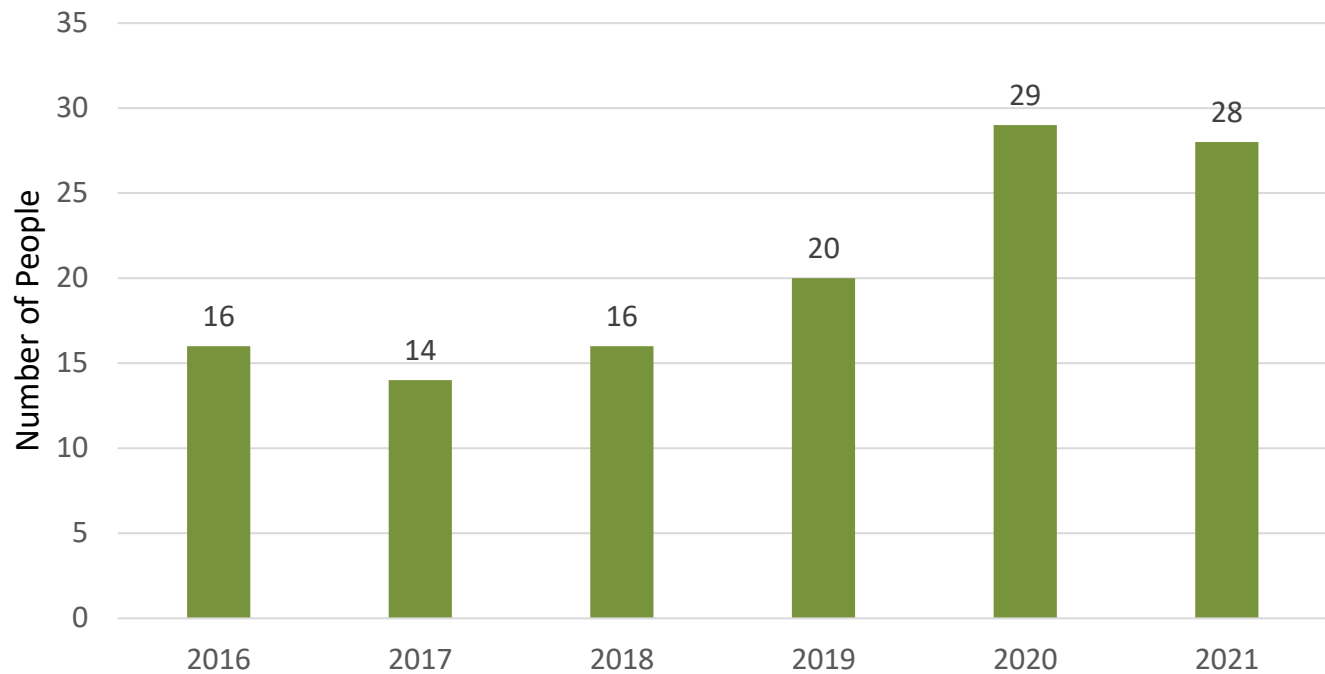
Fentanyl overdose deaths
increased 633% in 6 years

Overdose Deaths Involving Heroin



Overdose Deaths Involving Meth

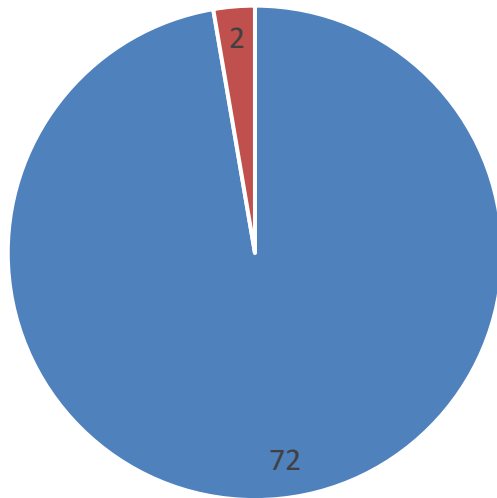
2016-2021
Deaths involving Methamphetamine



75% | Methamphetamine
increase | overdose deaths

Demographics of Deaths

2021 Drug Related Deaths Manner of Death



■ Accidental Deaths ■ Undetermined Deaths



Female
35%

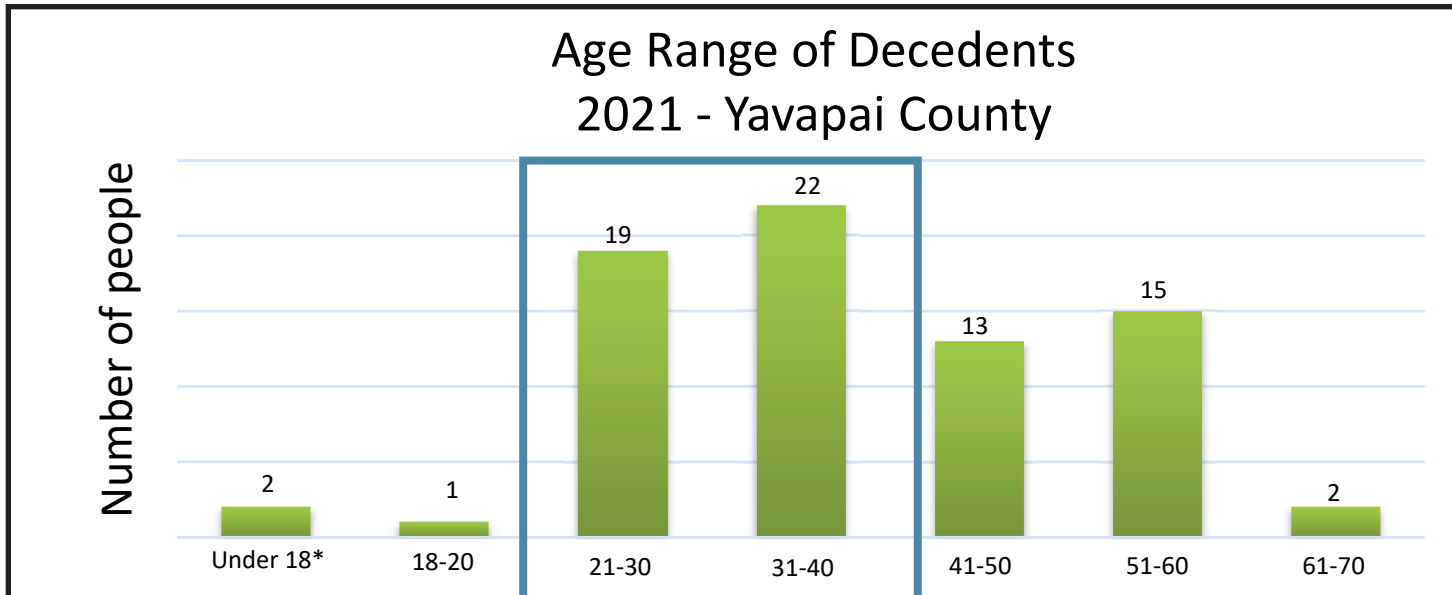


Male
65%

**Of the 74
drug-related deaths**

48 of the decedents were
male 26 of the decedents
were female

Age Range of Deaths



* In 2021, a baby died in utero due to maternal fentanyl use, and a 12-year-old overdosed on methadone.

55%
of overdose
deaths
were between
20 and 40 years of age



2021 Overdose Deaths by Month

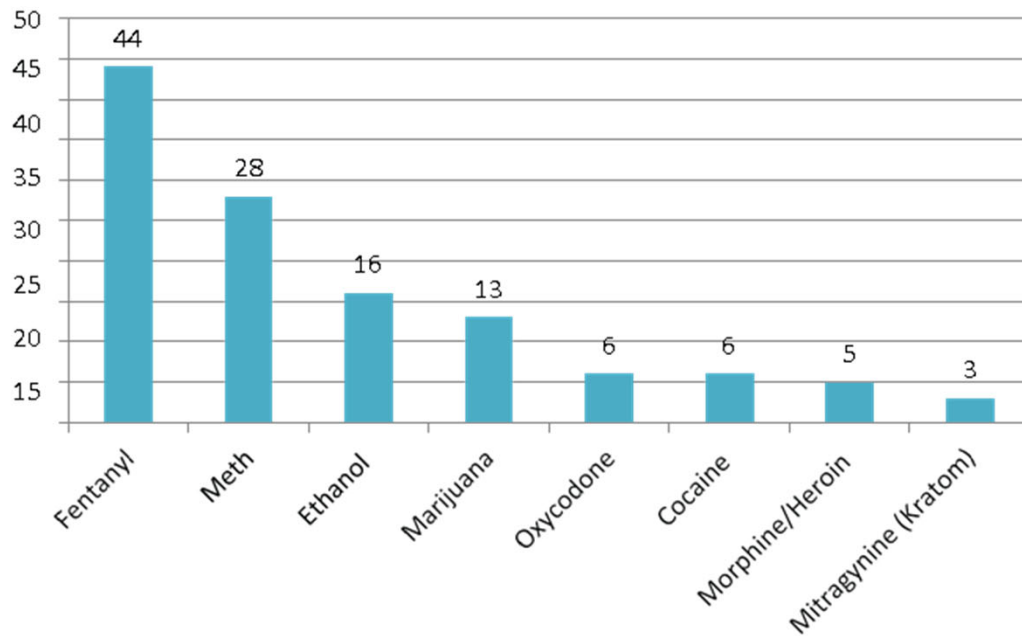
January	4 deaths	July	8 deaths
February	4 deaths	August	9 deaths
March	7 deaths	September	6 deaths
April	5 deaths	October	3 deaths
May	7 deaths	November	7 deaths
June	5 deaths	December	9 deaths

Location of Deaths

- 28 Deaths in Prescott
- 10 Deaths in Prescott Valley
- 7 Deaths in Camp Verde
- 7 Deaths in Cottonwood
- 4 Deaths in Clarkdale
- 3 Deaths in Mayer
- 2 Deaths in Chino Valley
- 2 Deaths in Dewey
- 2 Deaths in Paulden
- 1 Unknown
- 1 Death in Black Canyon City
- 1 Death in Cornville
- 1 Death in Humboldt
- 1 Death in Rimrock
- 1 Death in Sedona
- 1 Death in Tonto National Forest
- 1 Death in Wilhoit
- 1 Death in Yarnell

Chart of Most Common Drugs Found for Year

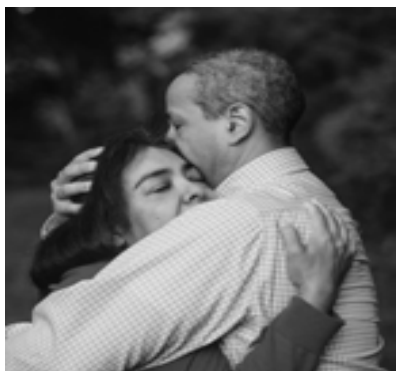
Most Common Types of Drugs Found in Decedents 2021 - Yavapai County



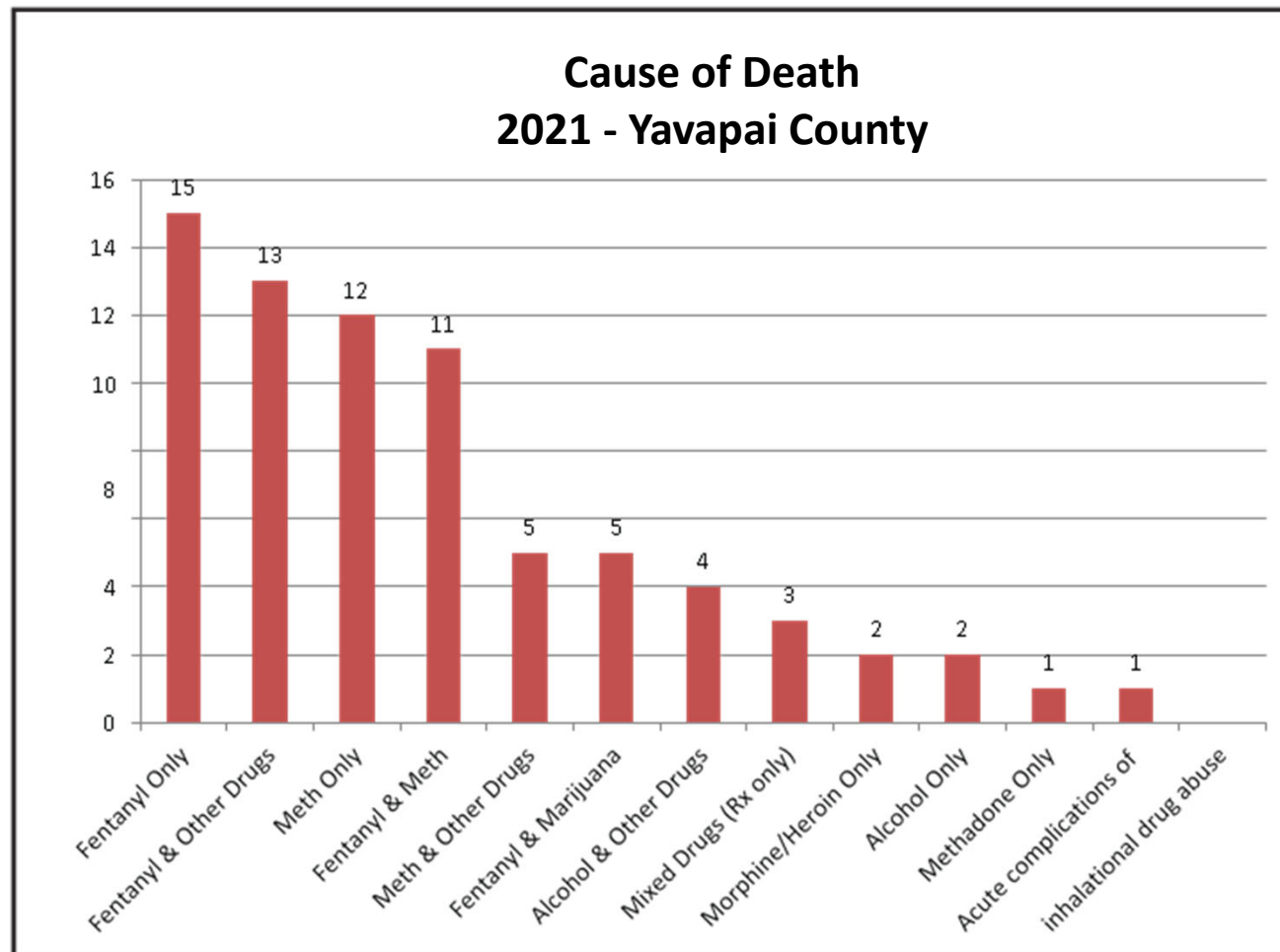
3rd highest

Alcohol surpassed marijuana as the third most common drug found in overdose deaths

Chart of Causes of Death- ME Reports



59% of overdose deaths involved fentanyl



Commonalities of Decedents

as identified by the Overdose Fatality Review Board

First Drug of Use



70%
used alcohol
and marijuana
at an early
age

Criminal History



24% were on
probation or parole at
the time of death

50% had spent
time in jail and or prison

History of Suicide Attempts

16%

had a history of
suicide attempts



Behavioral Health



60% had a
reported mental
illness

Commonalities of Decedents

as identified by the Overdose Fatality Review Board

Employment & Housing

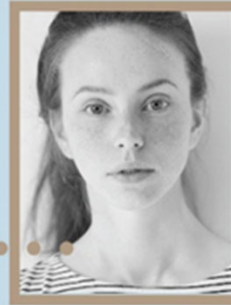


71% were unemployed at time of death

27% were homeless at time of death

Health Issues

48% had significant medical issues



Prescription Opioids



52% were prescribed opioids by a doctor at some time

Substance Abuse Treatment

50% had received outpatient treatment

22% had received Medication Assisted Treatment

57% had received inpatient treatment

18% came to Yavapai County for treatment



Family History of Substance Abuse



50% had family members with a history of drug and alcohol addiction

Recommendations are Key!

Recommendations and Findings for the Medical Community

1. Create a fact sheet to distribute to medical offices outlining how a COVID diagnosis can impact individuals with problematic drug use.
2. Develop a public awareness campaign on the adverse medical effects of drug use.

Recommendations and Findings for Substance Abuse Treatment, Recovery, and Mental Health Services

1. Provide support and recognition to staff members working in treatment and recovery.
2. Work to create effective community support, family support, and peer support when individuals are released from sober living and recovery facilities. Determine what will motivate the client to stay proactive.

Recommendations Regarding Policy

1. Enroll a minimum of 100 drug prevention advocates in the Request to Speak system at the state legislature.
2. Increase support for the legislation, such as a drug Homicide Bill, that will result in a reduction of drug overdose deaths in Arizona.
3. Advocate to make Kratom an illegal substance: Investigate how bath salts were made illegal in Yavapai County and how this process can be applied to Kratom.



**Don't know where
to turn for help?**

**Your life
matters**

Reach out today!

In crisis? Call 24/7 (877) 756-4090

- Care 1st Health Plan Arizona (866) 560-4042
- Catholic Charities (928) 778-2531
- Dept. of Economic Security (928) 277-2800
- Health Choice Arizona (928) 774-7128
- SW Behavioral & Health Services (928) 772-1610
- Spectrum Healthcare (928) 778-0330
- West Yavapai Guidance Clinic (928) 445-5211
- Yavapai Community Health (928) 583-1000
- Yavapai Regional Medical Center (928) 445-2700

MATFORCE
Mental Health & Substance Abuse Crisis Services

In crisis? Call 24/7 (877) 756-4090

- Care 1st Health Plan Arizona (866) 560-4042
- Catholic Charities (928) 634-4254
- Dept. of Economic Security (928) 649-6800
- Health Choice Arizona (928) 774-7128
- SW Behavioral & Health Services (928) 772-1610
- Spectrum Healthcare (928) 634-2236
- Verde Valley Medical Center (928) 634-2251
- Yavapai Community Health (928) 6396-8132

MATFORCE
Mental Health & Substance Abuse Crisis Services

Recommendations and Findings for Prevention

1. Continue the implementation of the fentanyl awareness campaign.
 - Continue to educate about the lethal dose in counterfeit pills laced with fentanyl.
 - Emphasize that 42% of counterfeit pills are deadly.
 - Develop and increase fentanyl messaging for youth and young adults.
 - Distribute educational materials to construction and hospitality locations.
2. Continue to increase access to and availability of naloxone.
 - Distribute naloxone to construction and hospitality locations in Yavapai County.

How do we inform our
community?

Annual Meeting



Overdose Fatality Review Board | Annual Report

Join community leaders and key stakeholders as the Yavapai County Overdose Fatality Review Board announces the findings and recommendations from the **2022 Annual Report**.

Tuesday, April 26, 2022

11:00 am | Virtual

Register here for this free, virtual event or visit matforce.org for more information.



Distribution of information



Press Releases



Articles written by
reporters



Social Media Posts



Distribution of
Reports



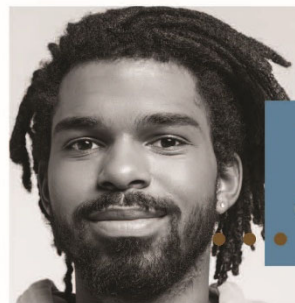
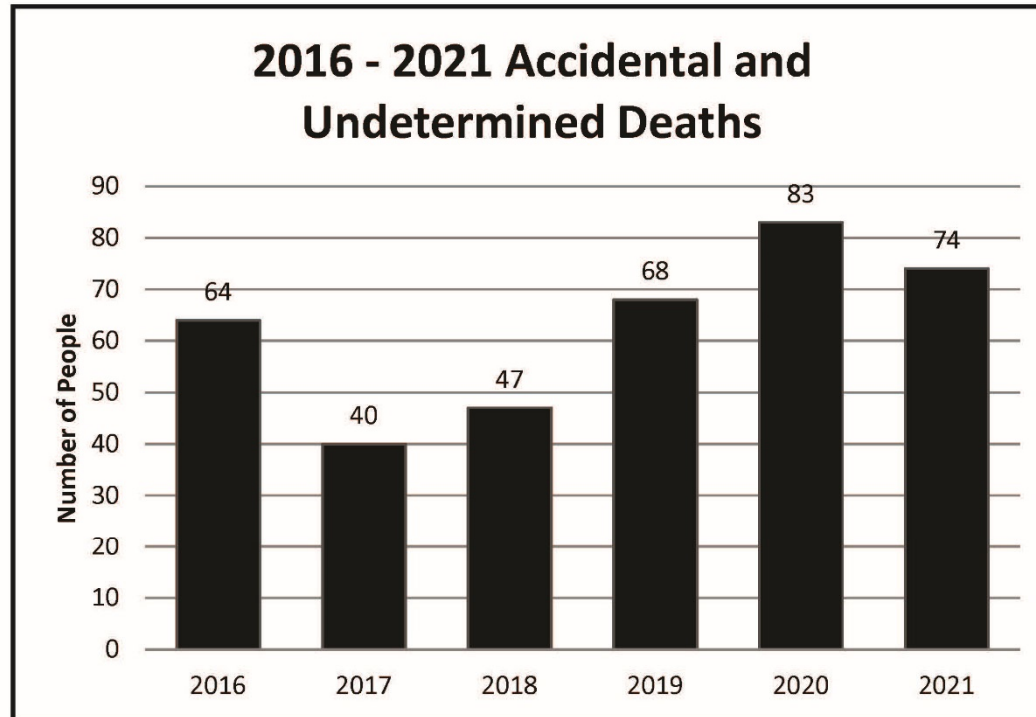
Presentations to
Service Clubs, other
groups



Capacity Building
through coalition!

How do we utilize the report?

Celebrate Successes!



We are saving lives.

**11%
decrease**

For the first time in 5 years
accidental or undetermined
overdose deaths decreased

Recommendations to Action!

- What are we doing to prevent overdose deaths?

